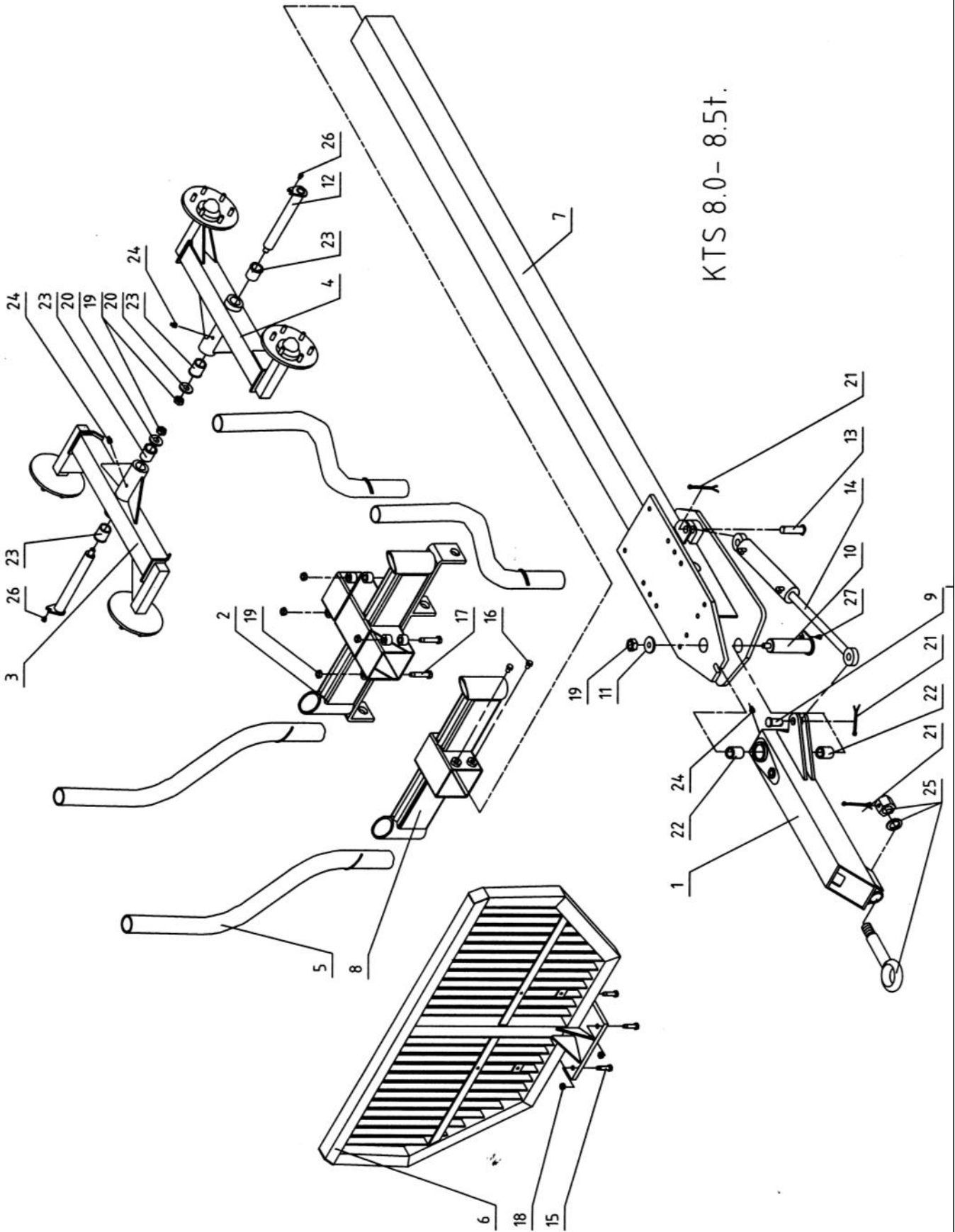


Reservdelar - K.T.S Huggarvagn 8,0 - 8,5 ton

KTS 8.0- 8.5t.



## Reservdelar - K.T.S Huggarvagn 8,0 - 8,5 ton

Pos. Item	Reservdel nr Spare Part No.	Antal Qty.	Beskrivning Description	Anmärkning Notes
1	TT 01.1 00 00A	1	Dragögla	
2 2b	TT 02 1 00 00 TT 02 6 00 00		Bogie bolster	1. - - KTS1049 2. Nr.50095 - -
3 3a	TT03.1 00 00	1	Bogie left side	1.- -009 2. 010 -- (shorter bushing)
4 4a	TT03.2 00 00	1	Bogie right side	1.- -009 2. 010 -- (shorter bushing)
5	TT04.1 00 00	4	Stötta	
6	TT05.1 00 00	1	Grind	1.KTS 1064 - - (narow on 90mm)
7 7b	TT08.1 00 00 TT08.3 00 00	1	Centralram	1.--- 01/05/2005 2. 01/05/2005--
8	TT09.2 00 00	1	Bolster	1.KTS 1064 - - (narow on 90mm)
9	TT01 00 01	1	Pin	
10	TT01 00 03	1	Pin	1. From 09/2005 - - (pin fixed by bolt)
11	TT01 00 04	1	Bricka	
12	TT02 00 01	2	Axle	1. From 09/2005 - - (pin fixed by bolt)
13	TT08 00 01	1	Pin	1. From 01/03/2005 ( L=120)
14	HC 80/40-290TT	1	Hydraulcylinder	
15	DIN 931-1 - M20 x 80 8.8	4	Hex-Head Bolt	
16	DIN 933 - M24 x 30 8.8	2	Hex-Head Bolt	
17	DIN 931-1 M24 x 160 8.8	4	Hex-Head Bolt	
18	DIN 985 - M20	4	Mutter	
19	DIN 985 - M24	7	Mutter	
20	DIN 9021 - 26	2	Bricka	
21	DIN 94 - 5 x 40	3	Saxpinne	
22 22b	75/70/40 75/70/85-70	2	Bussning	1. - - Nr.70035 2. Nr.70035 - -
23	50/55/65-40	5	Bussning	1. 010 - - (bronsbussning)
24	DIN7141 10x1	3	Smörjnippel	
25	BPT 35001	1	Hook	
26	DIN 6921 M12x20 8.8	2	Hex-Head Bolt	
27	DIN 6921 M16x35	1	Hex-Head Bolt	